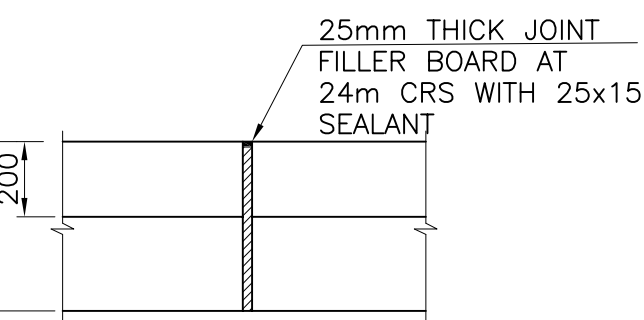
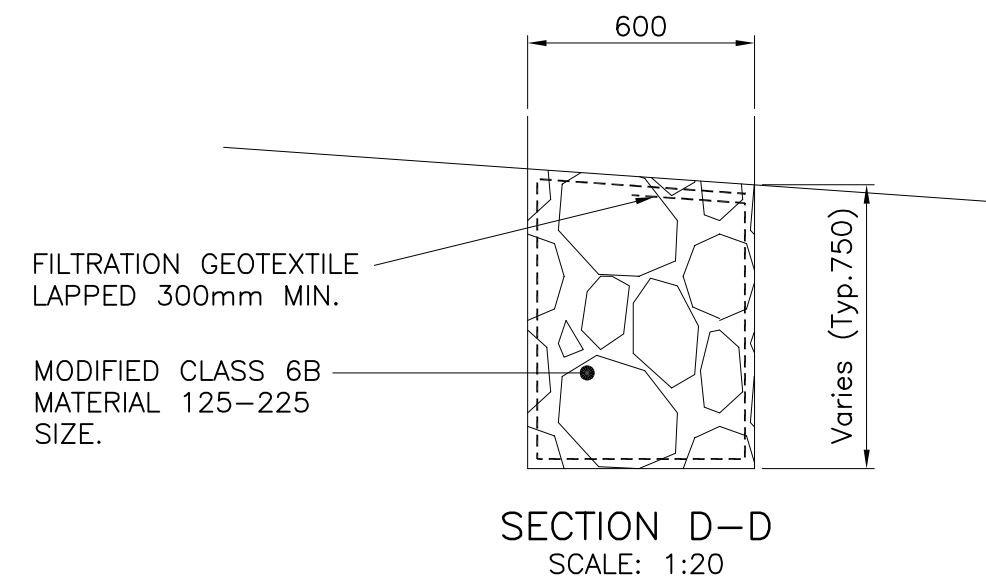


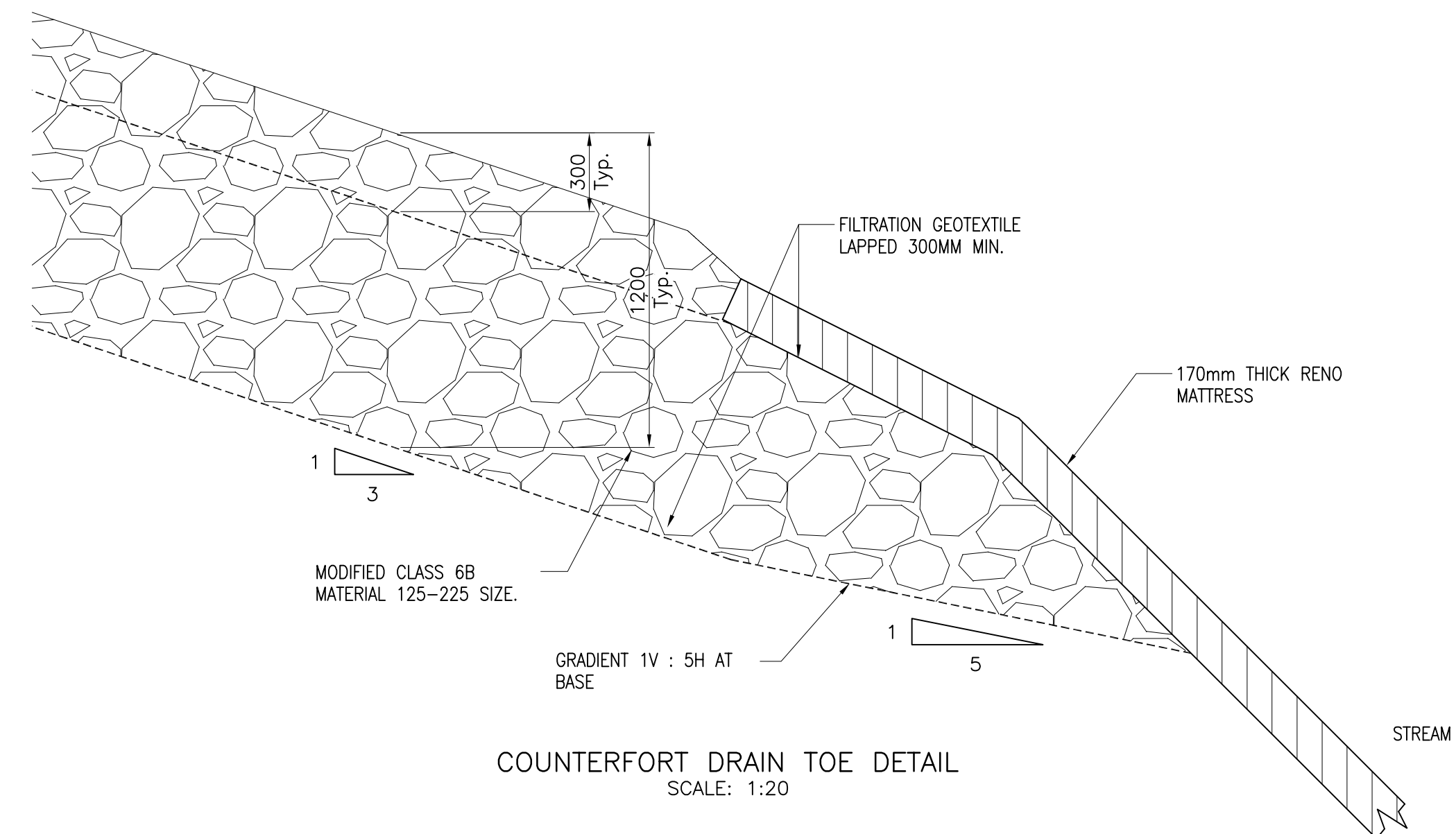
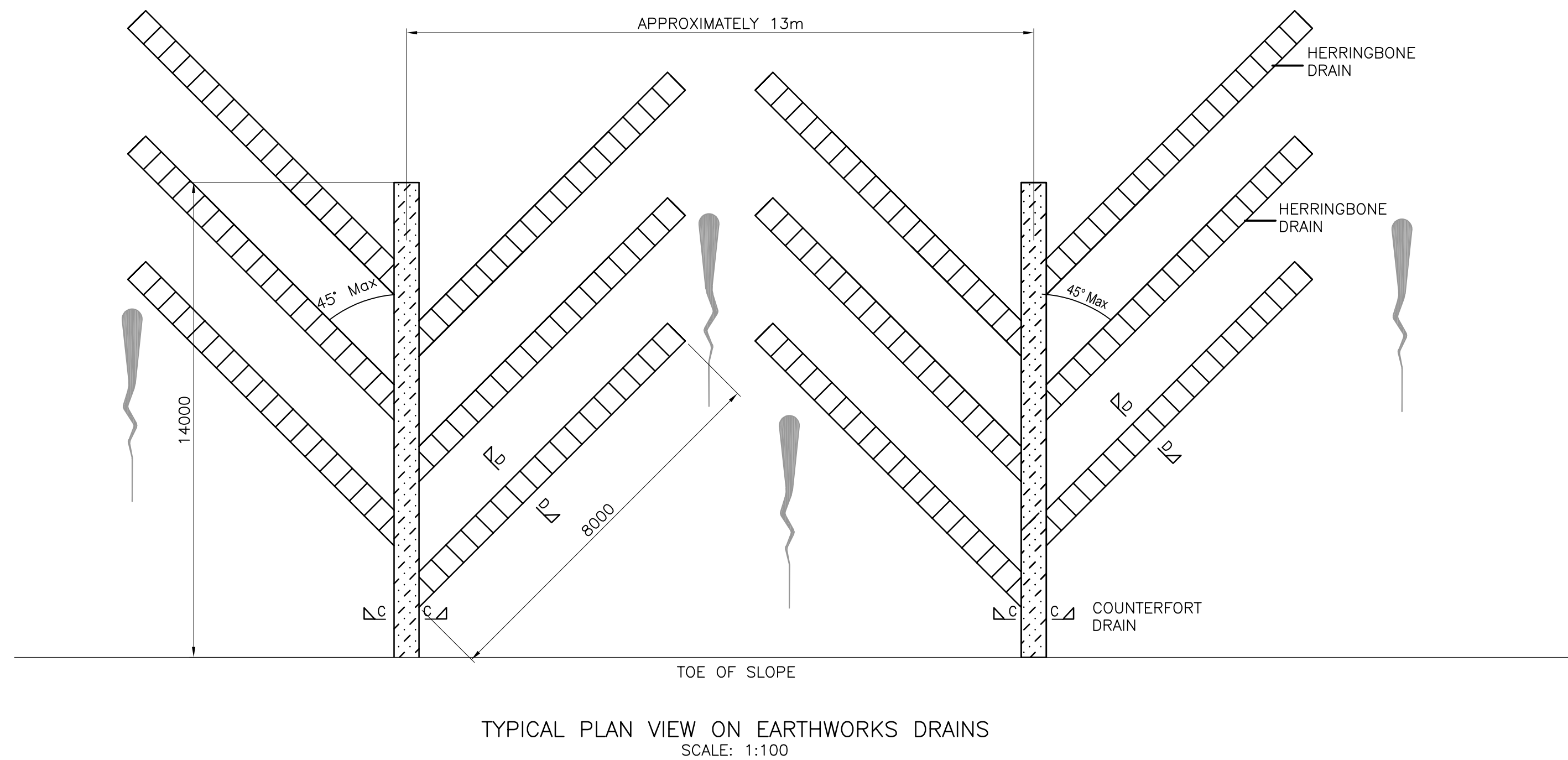
CAPPING BEAM JOINT DETAIL  
SCALE: 1:20



PILE CAP DETAIL  
SCALE: 1:20



CREST OF SLOPE



B	SC	JKS	DRF	25.01.19	FOR TENDER
A	MW	JKS	DRF	03.10.18	FOR INFORMATION
REV	DRN	CHK	APP	DATE	DESCRIPTION
<b>Wilde</b> Brindley Lodge, Adcroft Street, Stockport, Cheshire, SK1 3HS. www.wildectivil.co.uk Tel: 0161-474-7479 Fax: 0161-474-4892 Consulting Civil & Structural Engineers					
Client <a href="http://www.tameside.gov.uk">www.tameside.gov.uk</a> Economy and Environment Engineering and Environmental Services Engineering Design Unit Assistant Executive Director: Robin Monk Tame St Depot, Tame Street, Stalybridge, Tameside SK15 1ST Tel: 0161 342 8355 Fax: 0161 342 3964 email: eng.designunit@tameside.gov.uk					
Project <b>FAIRLEA EMBANKMENT REMEDIAL WORKS</b>					
Title <b>PROPOSED DETAILS</b>					
Scale AS SHOWN	Drawn MW	Date OCT 18	Chkd JKS	Approved DRF	
Drawing No. <b>302-198-004</b>				Revision <b>B</b>	
Status <b>FOR TENDER</b>				Sheet Size <b>A1</b>	